

# Stay ahead of the curve with quality and efficiency.

Expertly engineered to streamline workflows and maximize the productivity your environment demands. Consistently up to the task, the TASKalfa 8353ci Series Multifunction Systems effortlessly tackle your most challenging print, copy, scan and fax needs. You'll gain the advantage of powerful colored images, crisp text and detailed graphics, with multiple finishing options that uphold the professional look your business counts on. Long-lasting and ultra-reliable, these multifunctionals deliver the power and security to meet your high-speed, high-volume communication needs.

## **TASKalfa 8353ci Series**



**Up to 83 ppm B&W / 70 ppm Colour**

**Professional Finishing Options**

**HyPAS-enabled for Solutions & Apps**

**KYOCERA Net Manager Ready**



**TASKalfa 8353ci / 7353ci**



# The TASKalfa 8353ci Series Options



**MT-730 (B)**  
7 Bin Mailbox



**Copy Tray (D)**



**Keyboard Tray Kit**



**DF-7110**  
4,000 Sheet Finisher  
65 Staple / 65 Manual Staple



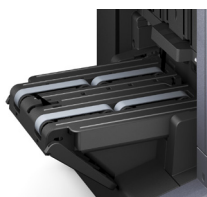
**DF-7130**  
4,000 Sheet Finisher  
100 Staple / 100 Manual Staple



**DT-730 (B)**  
Original Hard Copy  
Holder



**BF-730**  
Booklet / Tri-fold Unit



**BF-9100**  
Booklet / Tri-fold Unit



**NK-7130**  
Numeric Keypad



**Stapler Option**  
SH-10 for BF-730 / BF-9100  
SH-12 for DF-7110  
SH-14 for DF-7130

**Hole Punch Option**  
PH-7A for DF-7110 / DF-7130



**PF-730 (B)**  
2 x 500 Sheet Tray  
(Ledger)



**PF-740 (B)**  
2 x 1,500 Sheet Tray  
(Letter)



**PF-7130**  
500 Sheet MPT



**PF-7120**  
3,000 Sheet Side Deck  
(Letter)





# General Specifications



## TASKalfa 8353ci

### Pages Per Minute:

Black — Letter: 83 ppm, Legal: 49 ppm, Ledger: 41 ppm, 12" x 18": 41 ppm (print only)

Colour — Letter: 70 ppm, Legal: 42 ppm, Ledger: 35 ppm, 12" x 18": 35 ppm (print only)

**Warm Up Time:** 44 Seconds or Less (Power On)

### First Page Out:

Copy: 4.8 Seconds or Less Black, 5.9 Seconds or Less Colour  
Print: 4.9 Seconds or Less Black, 6.1 Seconds or Less Colour

### Typical Electricity Consumption (TEC):

120V: 1.70 kWh/week;

220V: 1.68 kWh/week

**Weight:** 401.2 lbs

**Maximum Monthly Duty Cycle:** 450,000 Pages per Month

## TASKalfa 7353ci

### Pages Per Minute:

Black — Letter: 73 ppm, Legal: 43 ppm, Ledger: 36 ppm, 12" x 18": 36 ppm (print only)

Colour — Letter: 65 ppm, Legal: 39 ppm, Ledger: 32 ppm, 12" x 18": 32 ppm (print only)

**Warm Up Time:** 44 Seconds or Less (Power On)

### First Page Out:

Copy: 5.4 Seconds or Less Black, 6.2 Seconds or Less Colour  
Print: 5.3 Seconds or Less Black, 6.3 Seconds or Less Colour

### Typical Electricity Consumption (TEC):

120V: 1.43 kWh/week;

220V: 1.34 kWh/week

**Weight:** 401.2 lbs

**Maximum Monthly Duty Cycle:** 400,000 Pages per Month



## Common Specifications

### Basic Specifications

**Configuration:** Multifunctional System — Print/Scan/Copy/Optional Fax

**Display:** 10.1" Colour Touch Screen Control Panel

**Resolution:** Up to 1200 x 1200 dpi

**Memory / Hard Disk Drive:** 4.5GB RAM / 8GB SSD / 320GB HDD Standard

**Duplex:** Standard Stackless Duplex Supports Statement (5.5" x 8.5") to 12" x 18", 16 lb Bond - 142 lb Index (60 - 256gsm)

**Standard Output Tray:** Statement — 12" x 18" / 70 sheets; up to 12" x 48" Banner (Single Sheet)

**Electrical Requirements:** 120V, 60Hz, 12A; 220-240V, 50Hz, 10A

**Dimensions:** 27" W x 31.1" D x 41.5" H

### Security Specifications

Local Authentication, Network Authentication, Encryption Communication (IPsec, HTTPS, LDAP over SSL, SMTP/POP over SSL, FTP over SSL, SNMPv3), TPM (Trusted Platform Module), Secure Boot (Firmware Authenticity Verification), Run Time Integrity Check, Data Security Kit (E) (HDD Overwrite Mode and HDD Data Encryption), Common Criteria (ISO15408 EAL2), IEEE 2600.2

### Print Specifications

**Standard Controller:** Freescale QorIQ T1042 (Quad Core) / 1.2GHz (8353ci & 7353ci)

**PDLs / Emulations:** PRESCRIBE, PCL6 (PCL-XL / PCL-5c), KPDL3 (PS3), XPS, OPEN XPS; Optional (UG-34): IBM ProPrinter, Line Printer, LQ-850

**Print Resolution:** Up to 1200 x 1200 dpi

**Fonts:** 136 KPDL3, 93 PCL6, 8 Windows Vista, 1 Bitmap

**OS Compatibility:** Windows: 7/8.1/10/Server 2008/Server 2008 R2/Server 2012/Server 2012 R2/Server 2016; Novell NetWare 3.x/4.x/5.x/6.x; Mac OS X v10.9 or later; Sun OS 4.1.x; Solaris 2.x; AIX; HP-UX (LPR)

**Mobile Printing:** Apple AirPrint®, Google Cloud Print™, Mopria®, KYOCERA Mobile Print

**Interfaces:** Standard: 10/100/1000BaseTX, Hi-Speed USB 2.0, 4 USB Host Interfaces, 2 Expansion Slots, IEEE 802.11b/g/n Wireless LAN (communication distance 98.5 ft)  
Optional: 10/100/1000BaseTX (IB-50 for Dual NIC);  
Optional: IEEE 802.11b/g/n (IB-51 for Wireless LAN Interface) (communication distance 328.1 feet)

**Network Print and Supported Protocols:** TCP/IP, NetBEUI, IPv4, IPv6, IPsec, HTTP, LPD, FTP, IPP, RawPort, LLTD, SNTP, DHCP, SMTP, POP3, DNS, SNMPv1/v2, WSD Scan/Print

**Drivers:** KX Driver, PCL Mini Driver, KPDL Mini Driver, KX Driver for XPS, Network Fax Driver, TWAIN Driver, WIA Driver, PPD for MAC, PPD for Linux

**Utilities:** KYOCERA Net Admin, KYOCERA Net Viewer, KYOCERA Net Device Manager, PDF Direct Print, Command Center RX

### Paper Supply

**Standard Paper Sources:** Dual 500 Sheet Trays, Dual 1,500 Sheet Trays, 150 Sheet MPT, Auto Selection / Switching

**Optional Paper Sources:** Dual 500 Sheet Trays (PF-730 (B)), Dual 1,500 Sheet Trays (PF-740 (B)); Side LCT: 3,000 Sheet Capacity Tray  
[PF-730 (B) and PF-740 (B) require PF-7130]

**Paper Capacity:** Standard: 4,150 Sheets;  
Maximum: 7,650 Sheets

### Paper Size:

Tray 1 — 5.5" x 8.5" — 12" x 18" (Statement to 12" x 18");  
Tray 2 — 5.5" x 8.5" — 12" x 18", Custom Size;  
Trays 3 & 4 — 8.5" x 11" (Letter)  
PF-730 (B): 5.5" x 8.5" — 12" x 18";  
PF-740 (B), PF-7120: 8.5" x 11";  
MPT, PF-7130: 5.5" x 8.5" — 12" x 18" (Multiple Sheets);  
Up to 12" x 48" Banner (Single Sheet)

**Paper Weight:** Trays: 16 lb Bond - 142 lb Index (60 - 256gsm)

MPT & PF-7130: 16 lb Bond - 166 lb Index (60 - 300gsm)

**Input Materials:** Standard/Optional Trays: Plain, Bond, Recycled, Preprinted, Vellum, Color, Pre-Punched, Thick, Thin, High Quality, Letterhead, Envelope, Custom  
MPT: Plain, Bond, Recycled, Preprinted, Vellum, Color, Pre-Punched, Thick, Thin, High Quality, Transparency (OHP film), Coated, Index Tab, Label, Letterhead, Envelope, Custom





The TASKalfa 8353ci Series goes well beyond printing, offering a portfolio of business applications for enhanced capabilities. Including scan distribution to back-end applications and document management systems, as well as print management to control devices, user policies and output costs.

## Additional Specifications

### Scan Specifications

**Scan Type:** Colour and Black & White Scanner

**Scan Resolution:** 600 dpi, 400 dpi, 300 dpi, 200 dpi, 200 x 100 dpi, 200 x 400 dpi

**File Formats:** TIFF, JPEG, XPS, OpenXPS, PDF (MMR/JPG Compression / High Compression PDF / Encrypted PDF)

**PDF Extension:** Searchable PDF (OCR) Standard; MS Office File (Standard)

**Scan Speeds (B&W/Color, @300 dpi):**

Simplex: 120 ipm

Duplex: 220 ipm

**Connectivity / Supported Protocols:**

10/100/1000BaseTX, TCP/IP, Hi-Speed USB 2.0

**Scanning Functions:** Scan to Folder (SMB), Scan to Email, Scan to FTP, Scan to FTP over SSL, Scan to USB, WSD Scan, TWAIN Scan, Specified Color Removal, Border Erase, Preview

**Original Size:** Through DP: Statement to Ledger (5.5" x 8.5" – 11" x 17"); Glass: Up to 11" x 17"

**Drivers:** TWAIN/WIA Driver

### Copy Specifications

**Copy Resolution:** 600 x 600 dpi

**Image Mode:** Text, Photo, Text/Photo, Graphic/Map

**Continuous Copy:** 1 – 9999 / Auto Reset to 1

**Additional Features:** Auto Magnification, Auto Paper Select, Auto Start, Auto Drawer Change, Interrupt Copy, Positive / Negative Reverse, Mirror Image, Rotate Copy, Border Erase, Split Copy, Electronic Sort, Margin Shift, Page Number, Form Overlay, XY Zoom, Prevent Bleed Through, Text Stamp, Bates Stamp, Blank Page Skip, Specified Color Removal, Preview, ID Card Copy

**Job Management:** 1,000 Department Codes, Job Programs, Job Build, Shortcut Keys, Repeat Copy

**Color Adjustment:** One Touch, Hue, Auto Exposure, Sharpness

**Magnification / Zoom:** Full Size, 4 Reduction, 4 Enlargement Preset Ratios, 25 – 400% in 1% Step Increments

**Document Box:** Custom Box, Job Box, Removable Memory Box, Fax Box (with optional Fax System)

### Standard Document Processor

**Type / Capacity:**

Dual Scan Document Processor / 270 Sheets

**Acceptable Originals:** 5.5" x 8.5" – 11" x 17"

**Acceptable Weights:**

Simplex: 13 lb Bond – 120 lb Index

(35 – 220gsm); Duplex: 16 lb – 120 lb Index (50 – 220gsm)

### Optional Fax Specifications

**Fax Type:** Fax System 12

**Compatibility / Data Compression:** G3 Fax / MMR, MR, MH, JBIG

**Transmission Speed / Modem Speed:** Less than 3 seconds / 33.6 Kbps

**Fax Memory:** Standard 170 MB

**Driver:** Network Fax Driver

**Fax Functions:** Network Fax, Duplex Transmission and Reception, Encrypted Transmission and Reception, Polling Transmission and Reception, Broadcast, Fax Server Integration, Fax Dedicated Paper Feeder

### Output & Finishing Options<sup>1</sup>

#### 4,000 Sheet Finisher DF-710 & DF-7130

**Stack / Staple Capacity:** Main Tray (A): 4,000 Sheets; DF-710 Sub Tray (B): 200 Sheets / 65 Sheets (up to 24 lb Bond [90gsm]) DF-7130 Sub Tray (B): 200 Sheets / 100 Sheets (up to 21 lb Bond [80gsm])

**Paper Size:** 5.5" x 8.5" – 12" x 18"

**Paper Weight:** 14 lb Bond – 166 lb Index (52 – 300gsm)

**Edge Staple Position:** 3 Positions: Top Left, Bottom Left, Center Bind

**Optional Punch:** PH-7A 2 and 3 Hole Punch Unit, Supports 5.5" x 8.5" – 12" x 18"; 14 lb Bond – 166 lb Index (52 – 300gsm)

**Dimensions:**

DF-710: 23.9" W x 26.3" D x 41.8" H;

DF-7130: 29.5" W x 26.2" D x 43.7" H

### Optional Booklet Folder / Tri-fold Unit:

**DF-7110:** BF-730 Booklet Folder supports 8.5" x 11", 8.5" x 14", 11" x 17"; Fold Booklet Staple: 16 lb – 24 lb Bond (60 – 90gsm) 20 sheets; 25 lb – 28 lb Bond (91 – 105gsm) 13 sheets; Higher than 28 lb Bond (Higher than 105gsm) 1 sheet; Fold booklet no staple: 16 lb – 24 lb Bond (60 – 90gsm) 5 sheets; 25 lb Bond – 72 lb Index (91 – 120gsm) 3 sheets; 32 lb Bond – 110 lb Cover (121 – 256gsm) 1 sheet; Trifold supports 8.5" x 11" only: 16 lb – 24 lb Bond (60 – 90gsm) 5 sheets; 25 lb Bond – 72 lb Index (91 – 120gsm) 3 sheets; 16 lb – 28 lb Bond (60 – 105gsm) 1 sheet

**DF-7130:** BF-9100 Booklet Folder supports 8.5" x 11", 8.5" x 14", 12" x 18"; Fold Booklet Staple: 16 lb – 24 lb Bond (60 – 90gsm) 20 sheets; 25 lb – 28 lb Bond (91 – 105gsm) 13 sheets; Higher than 28 lb Bond (Higher than 105gsm) 1 sheet; Fold Booklet No Staple: 16 lb – 24 lb Bond (60 – 90gsm) 5 sheets; 25 lb – 28 lb Bond (91 – 105gsm) 3 sheets; 29 lb Bond to 110 lb Cover (106 – 256gsm) 1 sheet; Tri-fold supports 8.5" x 11" only: 16 lb – 24 lb Bond (60 – 90gsm) 5 sheets; 25 lb – 28 lb Bond (91 – 105gsm) 3 sheets

### Additional Options

Banner Guide 10, Internet Fax Kit (A), IC Card Authentication Kit (B), Gigabit NIC (IB-50), Wireless LAN IEEE 802.11b/g/n (IB-51), ThinPrint (UG-33), Emulation (UG-34), Document Tray (DT-730 [B]), Keyboard Holder 10, EFI Fiery Printing System 16 (Only available for the following models: 8353ci/7353ci), Numeric Keypad (NK-7130)

<sup>1</sup> Only 1 Output Option can be installed



Specifications and design are subject to change without notice. For the latest on connectivity visit [ca.kyoceradocumentsolutions.com](http://ca.kyoceradocumentsolutions.com). TASKalfa, KYOCERA Net Manager, and Command Center RX are trademarks of the Kyocera Companies. AirPrint is a trademark of Apple, Inc. Google Cloud Print is a trademark of Google, Inc. Mopria is a trademark of Mopria Alliance, Inc. All other trademarks are the property of their respective owners.